

Lessening the divide — outdoor spaces



Interior design to some extent has now become a misnomer with both interior and exterior given equal consideration towards a cohesive living experience.

text—Sarah Hetherington

IDEA 2017 Residential Decoration winning practice Arent&Pyke has long championed the position that a project's interior and exterior design must have a shared calibre of design integrity. "Comfort and quality are essential to the outdoor space, from tiling or paving to outdoor kitchens, furniture and accessories, everything needs to be as resolved as the interior," say Arent&Pyke directors, Juliette Arent and Sarah-Jane Pyke.

How we use our outdoor spaces has also changed. Where once dinner parties were inside and barbecues were outside, today homes are generally more open and fluid with guests moving between these two spaces. Cohesion of design is also important, as Arent&Pyke suggest: "The transition from indoor to outdoor needs to flow and complement both palette and style." Effectively, the outdoor space is now recognised as an extension of the living space with a requisite continuation of quality.

Not only are aesthetics important when designing an outdoor space, so too are well-being and environmental consciousness. Perfect for outdoor environments, the Maximum Travertino exterior cladding by Tim Roberts Design from Artedomus, means an overall greater sense of health and well-being. Active 2.0, a

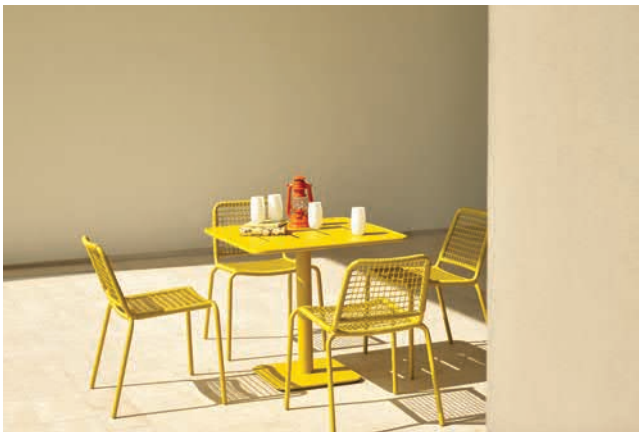
photocatalytic coating developed specifically for Maximum pressed porcelain panels and tiles that reduces toxic nitrogen oxides from the air, also reduces VOCs (volatile organic compounds), making it impervious to weathering.

For the ultimate in well-being and outdoor luxury, comes the VJet Turoa rail shower from Methven. Designed to put the user at the heart of the shower experience, VJet's variable spray slider allows for seamless transition between a firm invigorating spray to a gentle enveloping spray. Crafted from 304 grade stainless steel, the VJet delivers both functionality and design.

How we dress our outdoor spaces has also taken a huge step forward with extraordinary furnishings that range from formal to casual, exotic to simple. That said, the Australian outdoors remains the place we are most likely to unwind. "Entertainment areas are more relaxed and casual, more like an extension of the family lounge. And, while they obviously need to be serviceable, they also need to continue the levels of luxury the design has created indoors," say Arent&Pyke.

Recently launched by Tait, the Trace sunlounge, designed by Adam Goodrum is the epitome of resort relaxation. Hayley Beaden, marketing and communications specialist at

previous—Double Bay house by Arent&Pyke. Image Felix Forest. **left**—Maori, VEGA collection, Obodo. **right**—Adam Goodrum's Trace sun lounge for Tait. Image Haydn Cattach. **bottom**—King Cove by King Living



Tait, elaborates, "From poolside dips to rooftop Pimms, bask in the balmy embrace of Tait's Trace sunlounge." Natural curves along with sumptuous upholstery radiate poolside indulgence, yet the design is appropriately robust for a range of outdoor climates, withstanding sun, salt and chlorine. Featuring an intuitive handle mechanism with three levels of lounge posture, bespoke timber wheels with rubberised trim for ease of movability and corrosion-resistant, lightweight aluminium structure with laser-cut drainage holes for evaporation, drying time and ventilation, Trace is a considered choice for design conscious connoisseurs.

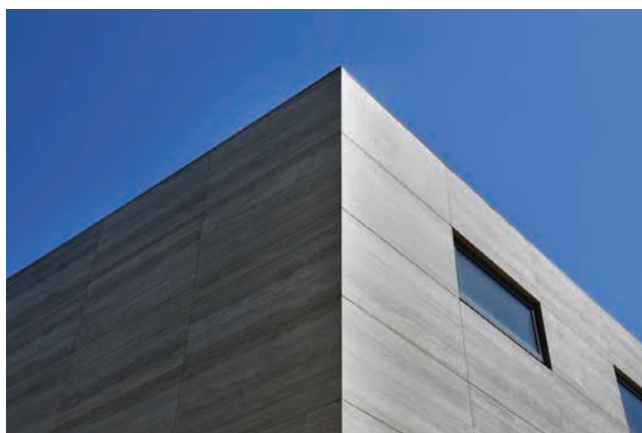
Alternatively, from King Living comes King Cove. This sleek and minimalist range features modular sofas that can be reconfigured to suit any outdoor space or occasion. From individual sofas to larger resort style sunbeds or lounges, the range is wholly versatile and allows for maximum flexibility in different open air environments. Designed with powder-coated alloy frames for durability and easy maintenance, the PostureFlex seating system delivers long-lasting comfort and durability. The sofas can also be complemented with ceramic or timber shelves to keep items such as reading material or cocktails within arm's reach.

A multitude of dining table options abound. For a casual dining experience, a playful design choice is Virus – a picnic table by Dirk Wynants for Extremis, available from CULT. Designed with one seat to suit four different table sizes, Virus offers the flexibility to mix a range of small to medium settings without losing uniformity of design. Different versions are based on an identical seating frame for two to five people – a whimsical and unique way of occupying space on a functional level while maintaining cohesive aesthetics. Virus is ideal for small spaces, balcony settings and urban living.

From Stylecraft comes the Leaf Collection, featuring a sled chair and table designed by Lievore Altherr Molina for Arper. Inspired by the irregular lines of the skeletal structure of a leaf, the collection is a contemporary twist on nature. It includes a low lounge, barstool, sled chair, stackable sled chair and table, in a powder-coated finish perfect for the outdoors.

The Manutti Torsa table from Cosh Living provides the perfect choice for dining, bistro or coffee environments outdoors. With sizes suitable for both small and large spaces, the range offers multiple styles: Scandinavian, with solid coloured stone top; Italian, featuring a sophisticated faux

left—Leaf Sled chair and table by Arper, Stylecraft.
right—Manutti Torsa tables, Cosh Living.
bottom—Active 2.0 Maximum Marmi Travertino in matt, Artedomus. Tim Roberts Design and MJB Builders



marble top; or Mineral, a monochrome ceramic version. Slender and lightweight with a sculpted solid wood base, the range can be used both indoors or out.

Available from Obodo is Maiori, a sustainable outdoor furniture range that is versatile, user-friendly and innovative. The VEGA Collection, for example, comprising table and stamped aluminium wicker chair, comes in a wide selection of colours and is simply an easy design with myriad application. The energetic colour palette celebrates the feel and flavours of summer and its Mediterranean cultural roots.

From Zenith Asia Pacific comes the Pino Collection, featuring seating and a range of complementary tables designed by Keith Melbourne. This truly contemporary and distinct form is characterised by a soft hexagonal hoop supporting a gently sculpted sling of seating wires. The seating wires gradually fan out to the rear of the chair, uniquely supported by legs that extend up to its top. Pino's sculpted seats have been carefully refined to provide a level of comfort not often associated with wire furniture. The table options comprise bar, café, side and coffee formats, manufactured using durable steel with zinc plating and compact laminate tabletop finishes. Made to withstand outdoor application,

Pino is equally at home in commercial, hospitality and residential indoor environments.

Lessening the divide, Arent&Pyke works the colour palette as an extension, often inviting the green of a garden into a home, while bringing stone or painted tones into the garden. "Colour is a key element in our designs and extending that to the outdoors areas just makes sense," say Arent&Pyke.

Products such as Haymes' Artisan Collection Mortar provide a malleable finish that has an earthy textural matt appearance. When the product is used externally, a beautiful characteristic of the finish is that, as it matures, it takes on an aged look and feel, adding to the authenticity of the product within its surroundings.

Embracing the outdoors has always been an essential aspect of Australian life – whether it is the desert, bush or coast. Our unique affinity with nature, the weather and open spaces now can be enjoyed at new levels, as architects and interior designers are pushing the boundaries of fluid, cohesively designed areas. The desire to create a seamless connection between the inside and out, with luxury, design-savvy features and functionality at their best allows the client adaptability and the ability to move between living and entertaining spaces in the home. It is no wonder people embrace the outdoors year-round.

left top—Virus by Dirk Wynants for Extremis from CULT. **left bottom**—Keith Melbourne's Pino Collection, Zenith Interiors. **right top**—Jet Turoa Rail Shower from Methven. **right bottom**—Haymes Artisan Collection Mortar in Rich Clay

