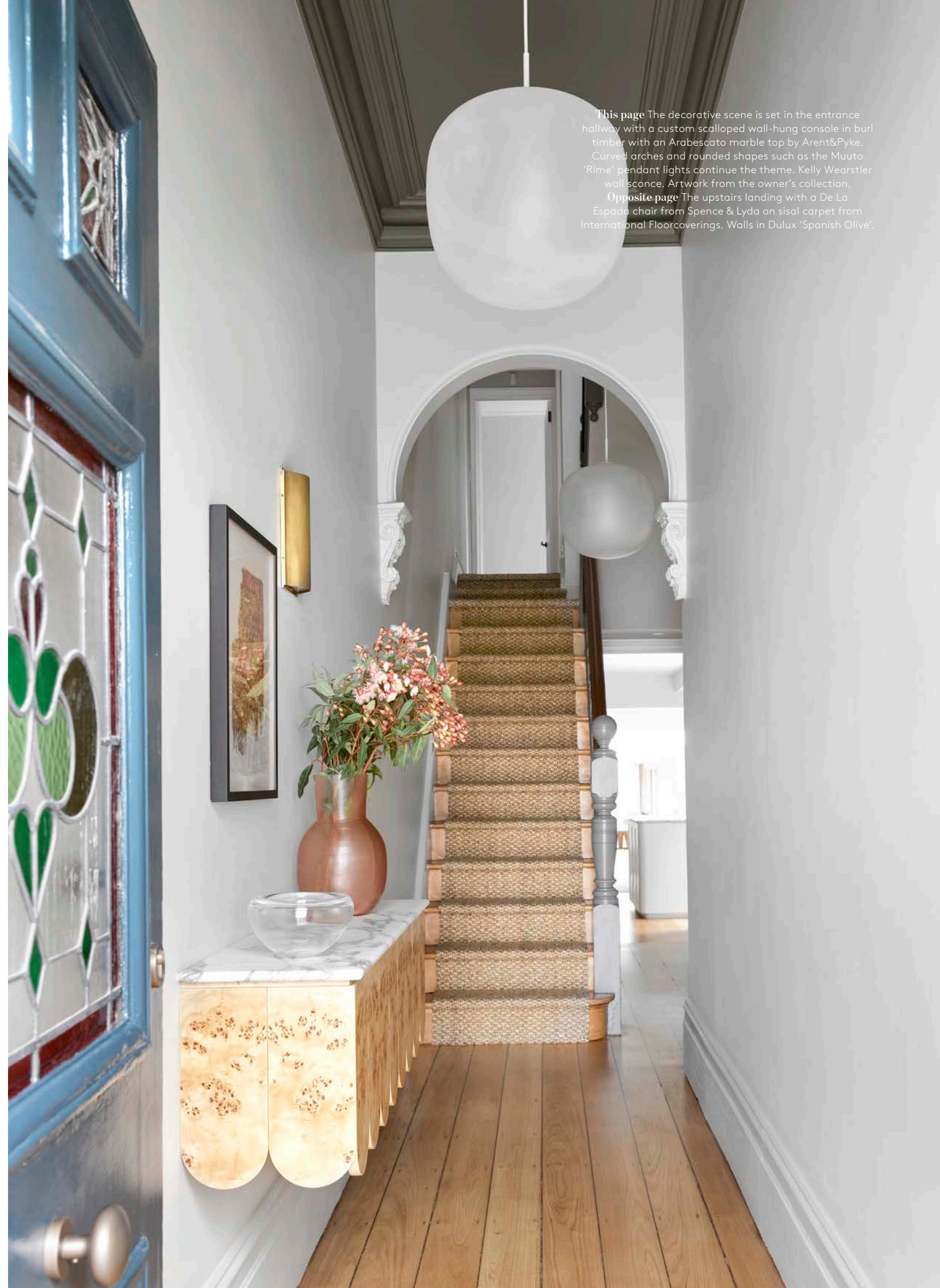


Turning CORNERS

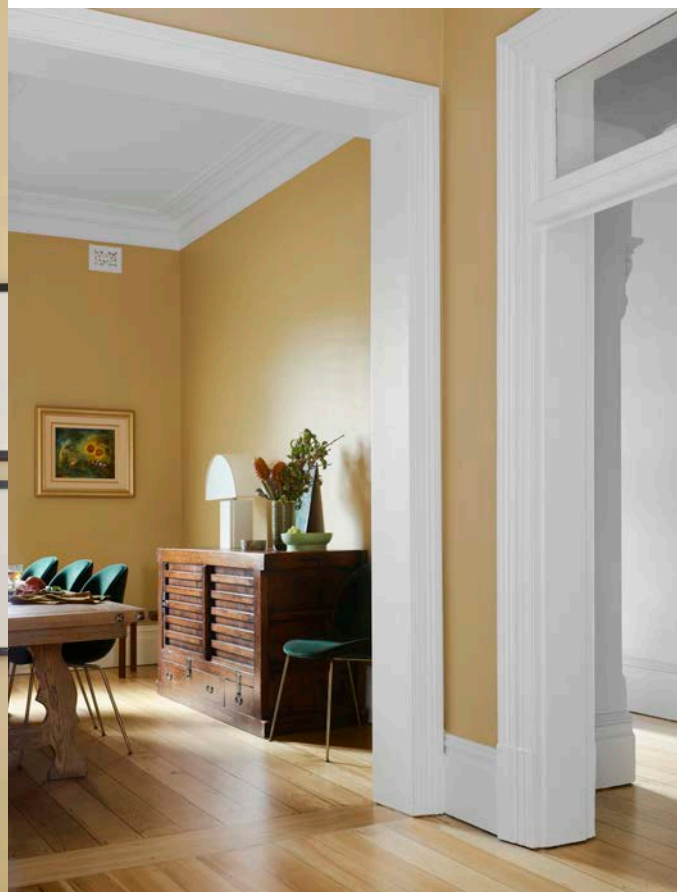
A turn-of-the-century terrace house in Sydney
has taken on a curvaceous
new persona with a softly feminine
and whimsical update by Arent&Pyke.



Words **JUDY PASCOE**
Photography **ANSON SMART**
Styling **CLAIRE DELMAR**



This page The decorative scene is set in the entrance hallway with a custom scalloped wall-hung console in burl timber with an Arabescato marble top by Arent&Pyke. Curved arches and rounded shapes such as the Muuto 'Rime' pendant lights continue the theme. Kelly Wearstler wall sconce. Artwork from the owner's collection.
Opposite page The upstairs landing with a De La Espada chair from Spence & Lyda on sisal carpet from International Floorcoverings. Walls in Dulux 'Spanish Olive'.



This page, clockwise from top left The terrace follows a traditional layout with formal living and dining at the front leading off the hallway. The artworks are framed vintage matchboxes. Walls in Dulux 'Butter Cookie'. The dining area has a vintage table and sideboard from the owner's collection. Gubi 'Beetle' chairs from Cult. Vintage Guzzini lamp. Artwork by unknown artist. Tom Dixon glass bowl from Macleay on Manning. Drinks trolley from Cult. Artwork over fireplace by Simarfa from Conley & Co. Custom console by Arent&Pyke with vases from Great Dane and Conley & Co. Artwork from owner's collection. **Opposite page** The formal living room opens to the central courtyard. Gubi 'Stay' sofa in velvet from Cult with cushions from Great Dane. Leather bowl from Cult on a custom ottoman in Kelly Wearstler 'District' fabric. Wool and silk rug from Tibet Sydney.

Having viewed in excess of 100 properties while searching for the right one, it was pure serendipity that the owner was driving down the street when this 1890s terrace in Sydney's eastern suburbs was open for inspection. "I wasn't really sure what I was looking for, but I loved the exterior of this house. As I walked through I got more and more excited as I knew it was just what I wanted," she says. "It was a lovely home but it had the potential to put my own personal taste into it eventually."

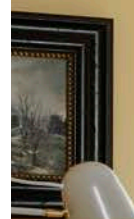
Originally a Sydneysider, the owner had lived in Melbourne for several years but decided to move back to be closer to family. Once purchased, she lived in the property for three years before starting the makeover. She had been following the work of Arent&Pyke for years so naturally they were the interior designers she turned to. The terrace house had been extended and modernised at some point but "it had not been well

designed", says the owner. "There were awkward areas that didn't flow and didn't work."

With four adult children living independently it was an opportunity for the owner to express her personal style and step away from the type of houses she had lived in previously. "I wanted to create a place for my family to come together but I didn't need to worry about practicality being the number one priority."

Her brief to Juliette Arent and Sarah-Jane Pyke was for an inviting, elegant and glamorous home with a sense of humour. "I wanted functionality, not practicality," she says.

The designers rose to the occasion, fashioning a jewel of a home that dazzles with colour and decorative pattern and ticks all the boxes for the owner. "They exceeded my expectations," she says. "The house is an absolute joy to live in. Even everyday tasks are more enjoyable here." »





This page, clockwise from top left Clever manipulation of the tight kitchen space allowed the designers to push the sink area outwards, visually opening it up to the garden. Vintage Stilnovo 'Diabolo' wall light. Benchtop in Arabescato Vagli marble. Tapware by Brodware. Brushed bronze bamboo handles. Curtains by Simple Studio. Interior designers Sarah-Jane Pyke and Juliette Arent. The kitchen has a glamorous look with brass drawer fronts, and benchtops and splashback in Arabescato Vagli marble. Plaster wall sconces by Aerin. Brodware tapware. The scallop motif is repeated in relief on the kitchen island which is painted in Resene 'Athens Grey'. **Opposite page** Custom banquette by Arent&Pyke in Clarence House fabric from South Pacific Fabrics. Barbera 'Molecule' table with custom marble top. Print from Studio ALM. Accessories from Humble Matters, Curatorial+Co, Greg Natale and Planet.



These pages, clockwise from top left The scallop pattern reappears in the informal living room on the custom cabinet with Calacatta Viola marble detail by Arent&Pyke. Lamp by Lucy Montgomery. The client's existing sofa was reupholstered. Cushions from Studio Cavit. Vintage Castelli 'Alky' chair. Ebony Heidenreich 'Cosmos' coffee table. Turkish rug from Halcyon Lake. *Surprising Valley* artwork by Dana Dion. The entertaining area at the back of the home with 1960s Italian rattan sofa from Conley & Co, vintage iron café chairs in Jim Thompson No.9 fabric and rug from Anibou. Curved windows and detail in the French doors are consistent with the curves elsewhere in the home.



« Sarah-Jane describes the project as “feminine, but grounded. We injected a little Parisian-style romance as well as whimsy,” she says, no doubt referencing the delicate scalloped flourishes that embellish the custom wall-hung console in the entry, whirl across the television cabinet in the living room, and make a graphic appearance in the ensuite wallpaper and main bedroom curtains and bedhead. The motif is also seen in the relief pattern in the kitchen cabinetry as well as alluding to the curved windows throughout the house, and it provides just the right amount of softness and femininity the owner was seeking.

While the makeover was extensive, the designers were able to contain it within the envelope of the existing structure, but the project was not without its difficulties. “The kitchen in particular was a challenge. It’s very narrow so we had to create a sense of spaciousness and light with the most practical flow possible,” says Sarah-Jane. “However, when the old kitchen was demolished we discovered an enormous pillar that could be removed and by reorganising the plumbing we could open up the sink space to the outside – a total game changer for the room. Without increasing the envelope of the building we managed to expand the space visually. It’s so nice to get some surprises on site!”

While the owner loves every part of the house, the main bedroom is her serene and beautiful private space. “It is totally

new and fresh, and the redesign is nothing short of brilliant,” she enthuses. Sarah-Jane says she wanted to create a bedroom suite that was a retreat which would feel nurturing to the owner.

“Usually in terrace houses we choose the largest front bedroom to be the main, but in this house the smaller back room had beautiful light and a sense of sanctuary. We set out with an ambitious floor plan to reconfigure the back half of the upper floor, creating a gracious main bedroom and bathroom and I’m thrilled with the result. It’s a dreamy room, private and tranquil, with refined details and graceful colours.”

Incorporating some of the owner’s existing furniture throughout the house was handled with grace by Arent&Pyke – her sofa was reupholstered for the informal living room, and her large dining table is now attended by new Gubi ‘Beetle’ chairs in a forest green. Gifted a Dana Dion artwork by her family, the owner says it now forms the centrepiece of the living area. But she admits that a sense of fun is paramount in the house, from the monkey wallpaper in the guest bathroom to the animal print on the kitchen banquette.

With the decked courtyard surrounded by greenery the house is perfect for entertaining but it is also a multi-functional home that welcomes robust family life. “It’s a home for one but the hub of an entire family,” says Sarah-Jane. “It’s very comfortable but it also has a really cool dynamic.” arentpyke.com



SPEED READ

» When the owner bought this c1890 terrace in Sydney’s eastern suburbs she turned to design practice Arent&Pyke to affect an elegant and inviting makeover that included a sense of humour. » The three-bedroom house had been extended some years before and Arent&Pyke were able to work within the existing envelope to create a fresh and feminine new look. » Employing immersive colour and pattern and the repetition of a scalloped motif have transformed the property into a chic and elegant home. » The main bedroom is the owner’s favourite space, enjoying soft light, swathed in a pretty palette and providing a cocooning feel. » While the home works as a private retreat for the owner it also offers the space and facility for her large extended family to come together.



This page The second bedroom has been designed to accommodate visiting family. Zanotta 'Fenis 2051' chair from Cult. & Tradition 'Flowerpot' pendant lamp by Verner Panton from Cult. *Open Plains* artwork by Peter Watts. 'Camilla' bassinet from McMullin & Co. **Opposite page, clockwise from top** The main bedroom is a peaceful retreat with custom curved bedhead by Arent&Pyke. Bed linen by Society Limonta from Ondene. Vistosi 1970s Murano glass wall sconce. Custom bench from Tigmi Trading. Curtains with scalloped edge by Simple Studio. Custom ottoman by Arent&Pyke. Walls in Resene 'Athens Grey'. The ensuite walls are covered in Sandberg 'Marie' wallpaper in Pink and Oriana marble. The custom cabinetry by Arent&Pyke is in Dulux 'Loganberry' with a Calacatta Viola marble top. Brodware tapware. 'Cabin' wall sconce from Dunlin. The dressing room features a custom ottoman by Arent&Pyke, an 'Organique' mirror by Maison Sarah Lavoine and a table lamp from Spence & Lyda.

