

L I V I N G

A family looked to renowned specialists of tone, texture and character Arent&Pyke to turn over a new leaf in their bright Sydney home.

By FREYA HERRING *Photographed by* ANSON SMART *Styled by* CLAIRE DELMAR

C O L O U R

This page in the main living area of this Woollahra home, client's existing **sofa** (on left) reupholstered in Pierre Frey fabric from Milgate; custom **sofa** (on right) designed by Arent&Pyke in Pierre Frey fabric; Maison de Vacances **cushions**; Silvia rattan **armchair** from DePadova; Collection Le Corbusier, Pierre Jeanneret, Charlotte Perriand 8 Tabouret tournant **stools** by Charlotte Perriand, enquiries to Mobilia; IBO **low table** by Christophe Delcourt for Delcourt Collection from Ondene; timber veneer **cabinetry** in Dulux Bongo Drum; **rug** from Loom; **artwork** by Alec Cumming. *Details, last pages.*





In the 1990s home, colour went off the charts — neon walls and blow-up chairs, multicoloured wires in see-through phones, and lest we forget the lava lamp's gloopy return. Slinking onwards into the new century, interiors in response drew themselves inwards to muted tones and ultimately the pared-back Scandinavian aesthetic that has endured ever since. But now, through the distressing throes of a pandemic, the heartening joy of colour has come back, sometimes through the deeply toned indulgence of maximalism. For Salsa Verde, a newly designed house in the eastern Sydney enclave of Woollahra, it's through a balance of soft colour and ornate detailing played against Scandi-chic refinement and a hint of whimsy. It's a bit of a mood.

The four-bed, five-bath house is a former worker's cottage that was expanded and rejigged by Sam Crawford Architects in 2016. The new owners, a family of five plus two small dogs, appointed Juliette Arent Squadrito and Sarah-Jane Pyke of Sydney design house Arent&Pyke to overhaul the interior after they purchased the property in 2020. "More colour and more interesting' was our overarching brief," says Arent Squadrito. "The house had a great blend of historic and contemporary architectural detailing, and we were engaged to explore new ideas to bring more colour and reflect our clients' personality into the home. We layered colour, pattern and texture via paint and new furnishings, working with their existing pieces, to make the home feel very personal."

Entering through the threshold, soft light floods the hall with warmth, making an immediate impression that you're entering into a living, breathing home rather than a showpiece. "We used a warm Venetian plaster to line the walls through the front entry foyer — a beautiful and textural way to catch the light and enhance the atmosphere,"

“We layered colour, pattern and texture via paint and new furnishings, working with existing pieces, to make the home feel very personal”

notes Arent Squadrito. "A velvet-covered Womb chair and sculptural Akari pendant draw you into this small, sunlit haven, serving as the welcoming committee for the rest of the home — a sanctuary of stillness and calm."

The feeling of hospitality continues with the vivid palette, a signature of Arent&Pyke's aesthetic. "Our work with colour is at the heart of what we do because of its power to create emotional connection and pure joy, which in turn, fosters wellbeing," says Arent Squadrito. "A thread of soft-pink nougat colour throughout glows with a calming and embracing warmth, while at the same time a vibrant and confident combination of jewel tones generates a playful energy from the living areas through to the kids' bedrooms."

After two decades living in New York and Asia, the clients wanted to incorporate their vibrant, international aesthetic into their new home. "Too often a 'modern' brief means black, white and lots of marble," the clients say. "In some respects, Arent&Pyke is the antithesis of this: lots of bold but soothing colour, layering and organic materials, interesting elements but not full of knick knacks."

The family spent time with the Arent&Pyke team to ensure that the house would not only look amazing, but function efficiently within their lifestyle. "Everything has a purpose or function. The Arent&Pyke team spent a lot of time understanding our life and daily habits, and were incredibly thoughtful in how this translated into the layout and design of the house," they say. "They did a great job of incorporating our most loved furniture and art, which we had accumulated over the past 20 years."

"Our client had an extensive art collection, but they sought our advice with the selection of an Ildiko Kovacs piece that ended up being such an iconic and transformative artwork for the dining room," says Arent Squadrito. "It echoes the conceptual >

This page in the kitchen, **cabinetry** produced by Adam Standfield Cabinet Making in Dulux Vintage Green; **island** in poplar burl timber veneer produced by Adam Standfield Cabinet Making with Aegean Green marble from Granite Marble Works; **splashback** and **rangehood** in Zellige handmade tiles from Surface Gallery; **cooktop** from Wolf, enquiries to Winning Appliances; **fridge** from Sub Zero, enquiries to Winning Appliances; Diabolo **pendant lights** by Achille Castiglioni for Flos, enquiries to Euro luce; Fredericia Spine wood **stools**, enquiries to Cult.





This page, from top left in the main ensuite, with a view of the walk-in robe, Zellige handmade tiles from Surface Gallery; **door frame** in Calacatta Viola marble. On the first-floor landing, Womb **chair** by Eero Saarinen for Knoll, enquiries to Dedece, reupholstered in Byram fabric from Kvadrat; **IKO2 side table** by Christophe Delcourt for Delcourt Collection from Ondene; **vase** from Conley & Co; Akari 33N **pendant light** by Isamu Noguchi from In Good Company. *Opposite page* in the dining area, Bramante **console** by Kazuhide Takahama for Cassina, enquiries to Mobilia; Atollo 235 **table lamp** by Vico Magistretti from Euroluca; Collection Le Corbusier, Pierre Jeanneret, Charlotte Perriand 8 Tabouret tournant **stool** by Charlotte Perriand, enquiries to Mobilia; Concentric **wall sconces** from Allied Maker; **artwork** by Ildiko Kovacs.

< direction for the home, which embodies rich colour and fluidity. The Cassina Bramante console that sits beneath feels like a powerful contrast — they are somehow perfectly suited for one another.”

A child’s bedroom turned out to be one of the design duo’s favourite spaces. “Colour, pattern and playfulness was our brief designing the little girl’s bedroom,” states Arent Squadrito. “Spoilt for choice, we landed on a fabulous Pierre Frey print, La Toile Du Peintre, for the bedhead. For the finishing touch, we trimmed it with a cobalt-blue brush fringe that matched a contrast band for the curtain treatment.” The soft-pink nougat colour palette — which also features on deliciously peachy terrazzo floor tiles in the kitchen — is reflected here in warm-hued bedding and dusky walls and carpet.

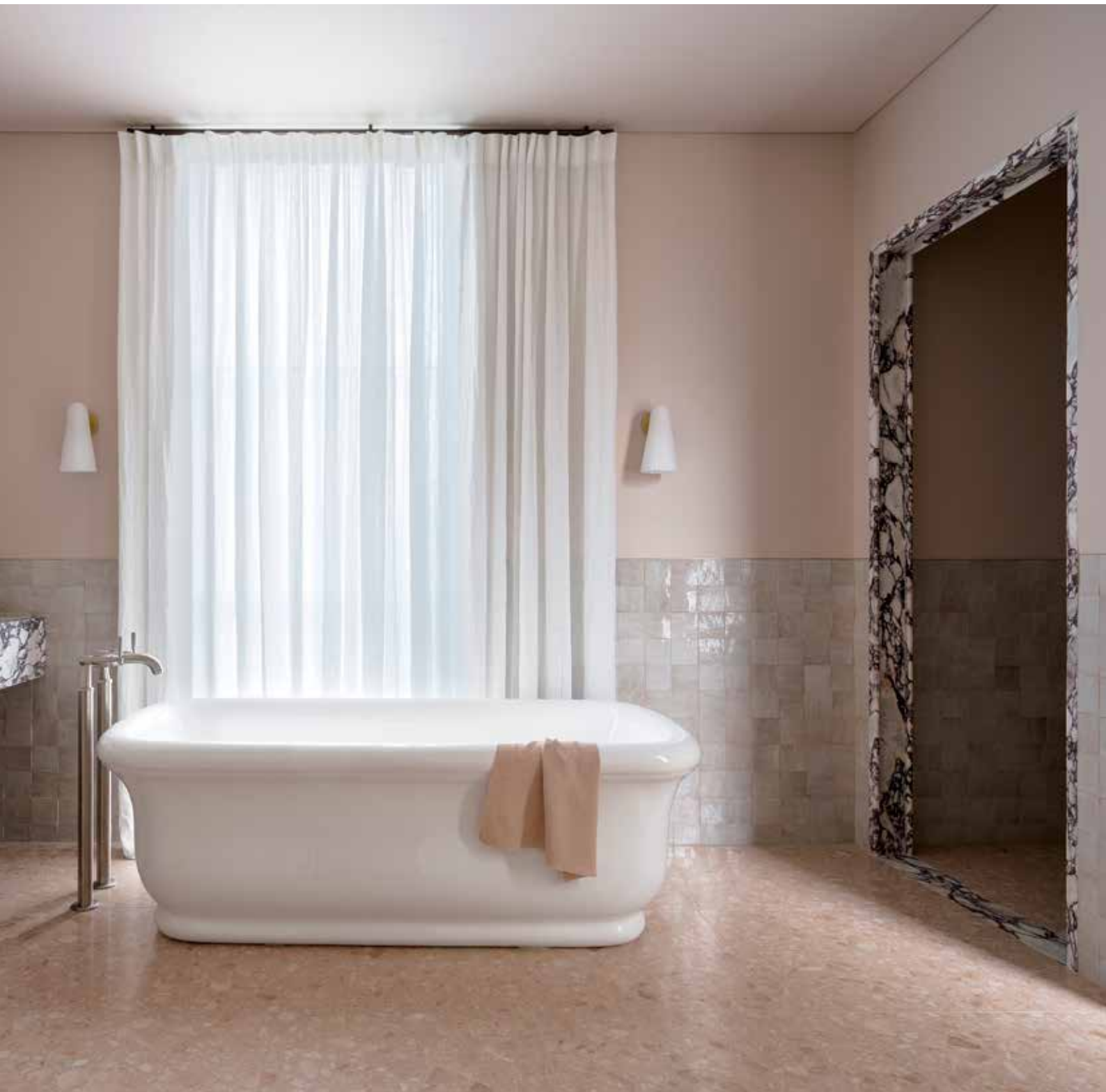
Associated with the Art Deco-era, the stippled silkiness of burl veneer also serves to link spaces, appearing in the main bedroom and ensuite. “It gives off a golden glow in the kitchen on the base of the island,” says Arent Squadrito. Atop it sits the deep, dark pageantry of a bespoke leathered Verde Guatemala marble worktop, continued into a supporting leg that juts into the room, announcing its presence rather than seeking concealment. “Its rich tone and powerful personality is the perfect anchor for the kitchen.”

This is a home that reflects the personality of its owners, while welcoming guests into the fold. “In every aspect it feels like a sanctuary,” say the owners. “Once you get inside the front door, the world is shut away.” **VL** arentpyke.com





These pages, from left in the main ensuite, custom **vanity** produced by Adam Standfield Cabinet Making in Calacatta Viola marble and poplar burl timber veneer; Perrin & Rowe Contemporary **tapware** from The English Tapware Company; custom **mirrors** designed by Arent&Pyke; Domi **wall sconces** from Articolo; The Water Monopoly Paris **bath** from The English Tapware Company; **flooring** in Santa Margherita Terrazzo tiles from Classic Tiles; Tabou **pouf** by Michaël Verheyden from Ondene.



This page in the main bedroom, custom **bedhead** designed by Arent&Pyke upholstered in Pierre Frey Stripes fabric from Milgate; Society Limonata **bed linen** from Ondene; custom **bedside table** designed by Arent&Pyke in vintage burl timber; ADA Alabaster **sconce** from Allied Maker; **cabinetry** in Dulux Bongo Drum; **carpet** from Halcyon Lake. *Opposite page* in the outdoor area, Tibbo **dining table** from Dedon, enquiries to Cosh Living; Harp **armchairs** from Roda, enquiries to Pure Interiors. *Details, last pages.*



